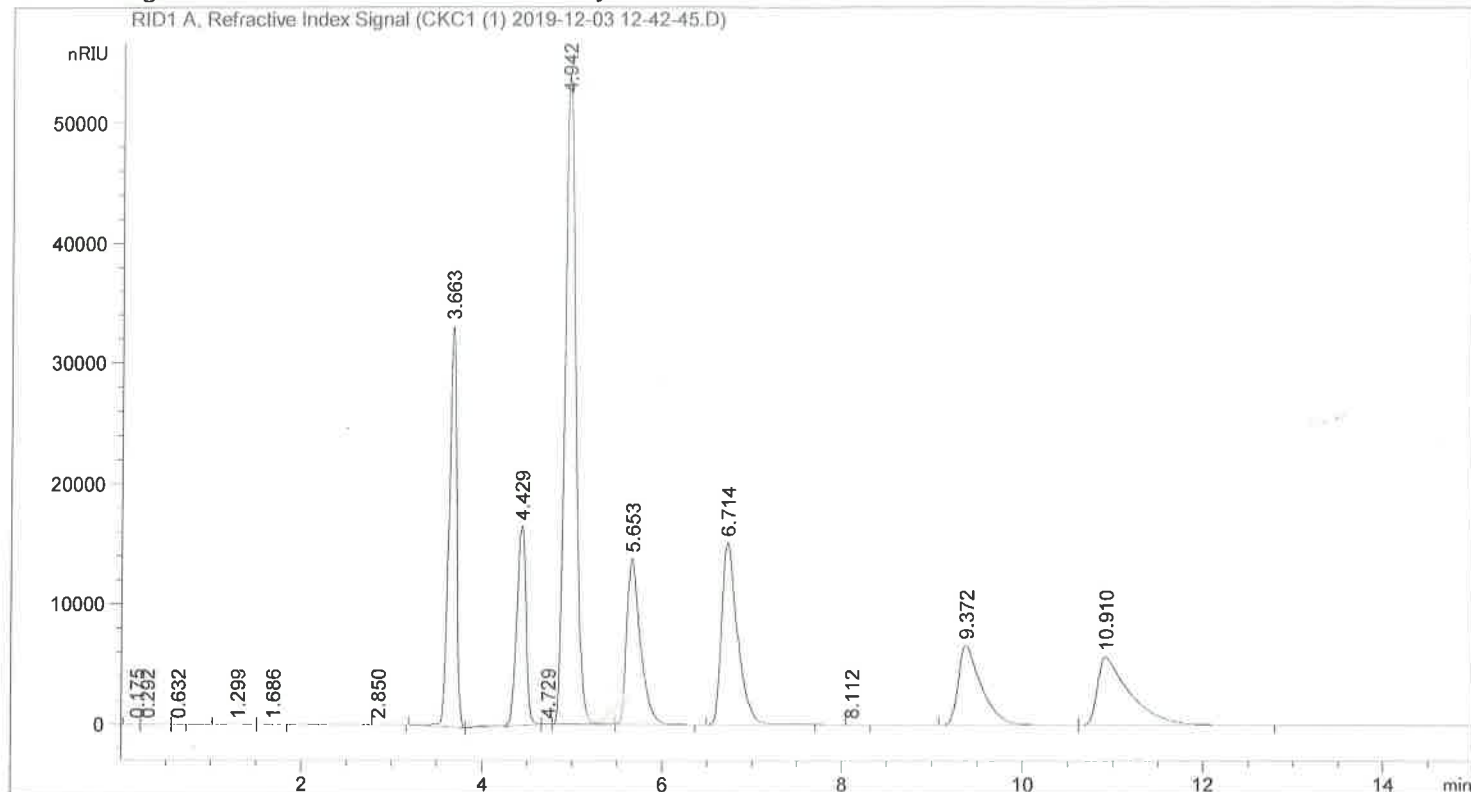


=====
Acq. Operator : SYSTEM
Sample Operator : SYSTEM
Acq. Instrument : HPLC 1260 Location : P1-A-01
Injection Date : 12/3/2019 12:43:24 PM Inj : 1
Inj Volume : 10.000 µl
Acq. Method : C:\Users\Public\Documents\ChemStation\1\Methods\GSO_TEST.M
Last changed : 12/3/2019 12:40:17 PM by SYSTEM
Analysis Method : C:\USERS\PUBLIC\DOCUMENTS\CHEMSTATION\1\METHODS\GSO.M
Last changed : 11/29/2019 3:04:14 PM by SYSTEM
=====

*Стандарт
смес. из
реагентов.*



=====
Area Percent Report
=====

Sorted By : Signal
Multiplier : 1.0000
Dilution : 1.0000
Do not use Multiplier & Dilution Factor with ISTDs

Signal 1: RID1 A, Refractive Index Signal

Peak #	RetTime [min]	Type	Width [min]	Area [nRIU*s]	Height [nRIU]	Area %
1	0.175	BV	0.1090	48.51749	6.17091	3.561e-3
2	0.292	VV	0.1885	89.96628	6.05330	6.603e-3
3	0.632	VB	0.1028	13.86992	2.04818	1.018e-3
4	1.299	BB	0.1859	48.42535	3.73300	3.554e-3
5	1.686	BB	0.1471	30.42163	2.68971	2.233e-3
6	2.850	BB	0.3674	64.42458	2.12060	4.728e-3
7	3.663	BB	0.0938	2.00282e5	3.33843e4	14.6991
8	4.429	BB	0.1122	1.19468e5	1.65731e4	8.7680

Peak #	RetTime [min]	Type	Width [min]	Area [nRIU*s]	Height [nRIU]	Area %
9	4.729	BB	0.0626	41.65323	11.25901	3.057e-3
10	4.942	BB	0.1259	4.52982e5	5.40169e4	33.2451
11	5.653	BB	0.1525	1.44885e5	1.38252e4	10.6334
12	6.714	BB	0.1802	1.86756e5	1.51805e4	13.7063
13	8.112	BB	0.1516	24.95341	2.20217	1.831e-3
14	9.372	BB	0.2477	1.16263e5	6633.90674	8.5327
15	10.910	BB	0.3398	1.41552e5	5691.84521	10.3888

Totals : 1.36255e6 1.45342e5

Summed Peaks Report

Signal 1: RID1 A, Refractive Index Signal

Name	Start Time [min]	End Time [min]	Total Area [nRIU*s]	Area %
HE-AY	3.300	3.720	2.00282e5	14.6991
MAY	3.750	5.870	7.17377e5	52.6496
DAY	5.870	7.520	1.86756e5	13.7063
TAY	7.520	15.000	2.57840e5	18.9233

Totals : 99.9783

2 Warnings or Errors :

Warning : Reference compound(s) not found
Warning : ISTD compound(s) not found

Final Summed Peaks Report

Signal 1: RID1 A, Refractive Index Signal

Name	Total Area [nRIU*s]	Area %
HE-AY	2.00282e5	14.6991
MAY	7.17377e5	52.6496
DAY	1.86756e5	13.7063
TAY	2.57840e5	18.9233

Totals : 99.9783

*** End of Report ***